



Working with you to provide the best possible outcome for your patients

Our number one priority is client satisfaction; that is, for both you the clinician, and your patient's.

Our highly experienced team is constantly striving to maintain its position as one of the leading providers and innovators of the orthodontic appliance manufacture. We invest heavily in the latest technology and training to ensure we can offer you comprehensive support and assistance. We have a wealth of experience, as we have been making bespoke orthodontic appliances for over 45 years.

We only use proven quality material for our appliances. We are proud of our reputation for producing high quality appliances and providing the ultimate level of personal customer service.

We are available on the phone, by email, or in person throughout the working day to discuss any aspect of your patient's appliance requirements.

8am - 5pm UK

9am - 6pm CET

6am - 12pm USA

6am - 12pm Brazil





A bespoke personal service for you and your patients

- One of the most cost effective clear aligner systems
- Easy to use
- Simply send us scans, impressions or models, tell us what your patient wants to achieve and we will do the rest
- We will assess the case, usually within hours, send you the assessment containing Pre and Post treatment images, animations and IPR chart
- Upon your approval we will manufacture your patient's "C-Thru" aligners and deliver them to you within a maximum of 5 working days



Some of our C-Thru Cases Before and After



See page 7 for "C-Thru" Luxury Whitening Kit.

The Hudson InClinger a revolutionary digital functional appliance system

The Hudson InClinger can be applied at any stage of C-Thru aligner treatment and can align teeth simultaneously.

- Reduces treatment time by having the functional element on the C-Thru aligner
- Reduces chairside time because no bite registration is required

The Hudson InClinger can be used as a single standard alone functional appliance

- Aesthetically pleasing compared to a traditional functional appliance.
- More comfortable for the patient to wear
- Minimal effect on speech as there is no acrylic in the palate to obstruct the tongue.



A bespoke personal service for you and your patients

- Reduce chairside time taken for bonding brackets using Swift IDB, treat more patients, increase your revenues
- Simply send your patient's scan, models or impressions
- Specify the brackets you use (or supply them with the order) and we will create the Indirect Bonding Tray with the brackets
- We can also supply, a patient specific kit including sequential archwires, ligatures and elastomeric chain to your specification





Luxury Whitening Kit includes:

Upper & Lower Whitening trays
4 x 3ml teeth whitening gel with desensitising potassium nitrate

Remineralising calcium & fluoride and soothing aloe vera

High water content to prevent tooth dehydration and fade-back

Excellent viscosity for ease of use

Neutral PH

6% Hydrogen peroxide for day use (60-90mins)

10% or 16% carbamide peroxide for overnight use

Calcium & aloe vera in hydrogen peroxide gel only



Let us digitise all your data

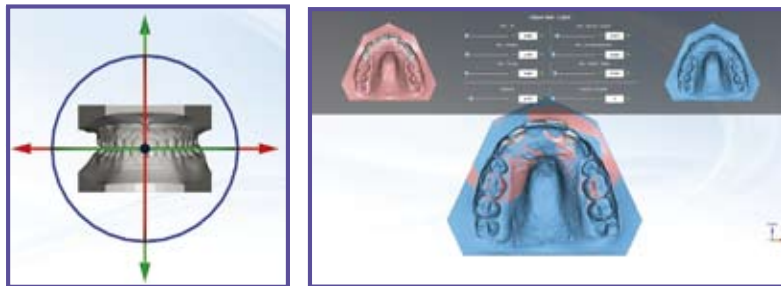
- Eliminate your storage issues
- Complies with the NHSBSA requirements

Send us your models (or imps), OPG's and photographs and we will scan and digitise them into a format for submission to the NHSBSA.

We will supply 2 discs, one for the NHSBSA and one for your records with the following data:

- PRE treatment 3d stl study model images
- POST treatment 3d stl study model images
- OPG/Photo folder
- Paperwork folder of the scanned paperwork

Or let us archive your legacy models to save on storage space and cost. Ask for a quote.



Surgical Wafers

Our 3D printed surgical bite wafers retain the occlusal relationship during and after maxillofacial surgery. Printed using the highest quality materials, our bite wafers will ensure the optimum jaw relationship.





Choose and Lease Alliance

Looking to invest in an Intraoral Scanner? Overwhelmed by the array of choice? Confused by the variety of technology and digital options available? Concerned about the capital outlay?

Let us help you!

At ArchformByte we have carried out, and are constantly updating, a comprehensive independent evaluation of all leading brands of Intraoral Scanners on the market.

Conventional impressions taking is costly when you take into account the time and materials used. Every day a practice taking more than 4 impressions can save hundreds of pounds by using an Intraoral Scanner and free up time to treat many more patients.

Schedule your free independent consultation with one of our Choose and Lease Alliance Consultants. We will perform a needs assessment for your practice and help guide you to which will best suit your methodology, workflow, practice and your budget. We will arrange a competitive monthly lease package with a leading U.K. equipment leasing company covering a bundle of : your choice of Intraoral Scanner, software 3 years updates, installation, training, 3 year warranty and a comprehensive 3 year maintenance contract. Lease payments can be offset against tax.

Furthermore as a Choose and Lease Alliance member you will receive preferential Alliance Laboratory pricing on your lab work. Simply call or email for a free consultation.



Removable Appliances



Barrar Appliance

This appliance is used for minor tooth movements and can be used as the final retainer.

Note: the palatal and lingual arches are acrylated.



Upper Segmental Screw Appliance

With a Z spring for in-standing lateral incisors.

Note: the posterior capping.



ELSA Appliance

This is a multi-purpose appliance. Using a midline screw and adequate fixation with anterior recurved palatal springs and labial bow and flat bite plane.



ELSA Appliance

Often used in Class II Div II cases for the proclination of central incisors.

Note: optional mid line screw and occlusal rests on molar teeth.



ELSA Appliance

The mid line expansion screw and the occlusal rests to reduce over eruption, whilst the palatal and labial arches align the anterior segment.



Upper Removable Appliance

With palatal canine retractors, labial bow soldered to 6.6 cribs with flat anterior bite plane.



Upper Removable Appliance

Showing a Roberts Retractor.



Upper Removable Appliance

Buccal canine retractor 0.6mm wire supported in a tube.

Note: the Southend Clasp on 1.1



Hawley Retainer - Plus

With self straightening wires for space closure.



Upper Removable Appliance

Showing reverse loop canine retractor. As the canine is retracted the arm is shortened and reattached to the canine.



Upper Removable Appliance

Retained by molar cribs and ball clasps with Z springs to procline upper laterals.



Coffin Spring Appliance

This appliance can be used for individual movement of the buccal segments.

Note: Optional EOT tubes on this appliance.

Removable Appliances



Coffin Spring Appliance

Used for bi-lateral expansion.
Note: the occlusal cover and the Adams cribs supporting two half Adams cribs.



Upper Removable Fitted Retainer

This is often used as a support stage following Twin Block therapy.
Note: the fitted arch and the inclined anterior bite plane.



Begg Retainer

Made from 0.9mm wire.
Note: the close fitting on the second molar.



Removable Space Maintainer

Often used where deciduous teeth have been lost.



Hawley Retainer - Reverse Loop

Showing archwire soldered to molar crib and reverse loops in arch.



Fan Screw Appliance

This appliance allows buccal movement of the anterior segment with minimal movement of the 1st and 2nd molar segments when the screw is activated.



Hawley Retainer

Showing an acrylic archwire, used where there have been anterior rotations.



Lower Removable Appliance

With twin screws to upright and align lower first molars or second molars.
Note: the anterior retention - 2 ball clasps.



Upper Bite Plane Appliance

Showing the construction of the Plinth clasp. Used in conjunction with a fixed appliance.



Pendulum Appliance

This appliance is used for distalising upper first molars using TMA wire into horizontal tubes on the molar bands. The remainder of the appliance is completely removable with a mid line expansion screw and cribs on the premolars. An anterior bite plane can be used in these cases.



Habit Breaker

Used to prevent digit sucking and sometimes to reduce tongue thrusting habits.



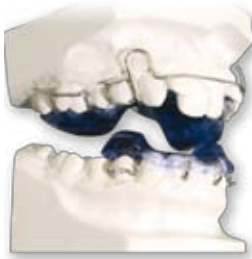
Three Way Expansion Screw Appliance

Usually used to gain space for excluded canines or anterior teeth.





Functional Appliances



Twin Block

Standard Class II Div ii Twin Block.



COFF Appliance

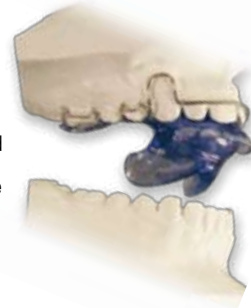
Offset Front View.

Note: the acrylic is extended onto the lower canines.



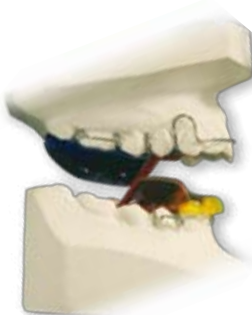
COFF Appliance

Lateral view of a COFF appliance. Removable, fixed functional, only removable by the clinician



Medium Opening Activator

For treating Class II with large overbite and overjet.



Twin Block Class II Div i

Suitable for small overjet cases.



Acrylic Colours

Appliance showing only a few of the acrylic colours available. Any single colour is available at no extra charge.



Hudson InCligner System

Digital Functional Appliance

Fixed Appliances



MIA Quad
Helix
Fitted into
horizontal
lingual tubes
on the molar
bands.



Lower
Lingual Arch
Used to
maintain space
and increase
the anchorage
in Class II
cases.



Fixed Rapid
Maxillary
Expansion Screw
Appliance



Fixed Habit
Breaker
Soldered to
molar band.



Fixed Rapid
Maxillary
Expansion Screw
Appliance
Note: Second
pre molar as a
0.8mm contact
wire on each
side.



Upper Fixed
Appliance
Incorporating a
removable flat
anterior bite
plane using
Plinth clasps
over the buccal
tubes.



Fixed Lingual
Appliance
Using a small
screw to
increase the
lower inter
canine width.



Upper Fixed
Appliance
(Riconator)
With a bite plane
and auxiliary
springs to
pre molars.



Upper Fixed
Appliance
With Nance
button.



Unusual Fan Type
Fixed
Expansion Appliance



Upper Fixed
Appliance
With Nance button
and inclined bite
plane
relieved behind.



Fixed
Transpalatal Arch
Used to increase
anchorage.



Fixed Appliances



Bonded Lingual Retainer

Bonded to lower canines.

Note: alternative option twistflex archwire can be bonded to each tooth. This can be done using a silicone matrix for accurate placement.



Standard Fixed Transpalatal Arch

Soldered to molar bands.

Note: the clearance from the soft tissue.

Anti Snoring



Silensor Anti Snoring Appliance & Kit

The kit contains various lengths of support arms and extra studs.

Spring Aligner



Retainers



Hawley
Retainer - Plus



Manchester
Retainer



TruTain
Retainer



Twist-Flex
Retainer



Bonded Lingual
Retainer



Monarch Mouthguards

Mouthguards are produced in Light, Medium, Heavy and Heavy Pro.
Please state the sport that the guard is to be used for and colour(s) or flag required.
(Yes, we can make mouth guards over fixed brackets!!)

Any colour, club logo or school emblem can be incorporated. Each mouthguard can be customised with the wearer's name, at no extra cost.



Dr Robert Scherngell Orthodontic Training Programme

Dr Robert Scherngell has been practising orthodontics for over 25 years and has been teaching orthodontics globally for over 10 years. He runs successful orthodontic programmes in Europe, Asia, Australia and the USA. Dr Robert Scherngell's comprehensive orthodontic seminar series offers every level of education from beginners to experienced orthodontists. His knowledge and experience are based on the diagnosis and treatment of more than 6,000 cases in his two highly successful practices in Vienna, Austria. Dr Robert Scherngell is a member of the ABO (Austrian Board of Orthodontists) and obtained his master's degree in orthodontics from the Danube University in Austria.

Training Objectives

- On completion of each seminar, you will be able to successfully carry out the treatment topic covered in each stage in your own practice.
- Dr Robert Scherngell supports each seminar with intensive coaching up to the successful completion of treatment of each case throughout and after the programme.
- Delegates patient cases are analysed and planned jointly during each seminar. The knowledge gained from the joint discussion and analysis of each case immediately enables you to apply your new skills to your own practice.
- All types of appliances are covered during the seminar series: from simple cases using aligners and removables, up to functional appliances, fixed and bracket systems.
- Supporting documentation is provided.



Call or email for further information or visit our website for details of the forthcoming seminar programme.



Contact Details

Headquarters

ArchformByte Limited
76 Tyler Street
Sheffield
S9 1DH
UK

Tel: +44 (0) 114 243 5400
www.archformbyte.com

Chairman

Mark Francis B.Sc.(Hons.), FCA, FCSI
Email: mfrancis@archformbyte.com



Mark Francis

Chief Executive Consultant Director South West

Pennie Hudson Ward B.Sc.(Hons.)
Email: phudsonward@archformbyte.com
Mob: +44 (0) 7831 863 444



Pennie Hudson Ward

Laboratory Production Director

Daniel Marshall FdSc
Email: dmarshall@archformbyte.com
Tel: +44 (0) 114 243 5400
Mob: +44 (0) 7710 082 998

Consultant Director Midlands

Alistair Francis BA (Hons), FloD
Email: afrancis@archformbyte.com
Mob: +44 (0) 7788 104 333

Consultant Director South

David Roberts MA(Oxon), ACA
Email: droberts@archformbyte.com
Mob: +44 (0) 7789 909 995



UK - Tel +44(0) 114 243 5400 Email info@archformbyte.com